

5-Series Window

Designed for higher performance
Reimagined for your home project



Introducing the Improved 5-Series Double Hung New Construction and Replacement

5 Reasons to Choose the 5-Series

1. Energy Star v6.0 Compliant
2. PG-35 Rating
3. Meets Egress at 37.5" x 59.5" (TTT)
4. Limited Lifetime Warranty
 - Lifetime (glass, hardware, vinyl)
 - 5 Years Labor (includes parts)
 - 20 Year Transferrable
5. Competitively Priced



**Shown with optional flat casing*

Available for both new construction and replacement projects, the 5-Series double hung window provides performance, strength and beauty while offering excellent value. The 5-Series' durable multi-chambered fusion welded frame and sash provide superior energy efficiency. 5-Series products are backed by an industry-leading warranty and the local sales and service support you expect from Paradigm.

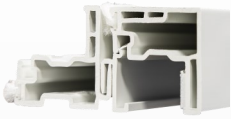
5-Series Window Configurations



The 5-Series is available in double hung, single hung, picture and slider window types. Accessories include factory and reinforced mulls, extension jambs, drywall returns and flat exterior casing.

www.5seriesolution.com
www.paradigmwindows.com

5-Series Features



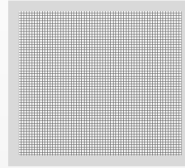
Full interlock system at the meeting rail improves security while several contact points of weather-stripping reduce air infiltration.



Standard 3/4" 3rd surface LowE glass with argon gas fill significantly improves solar heat gain to meet EnergyStar 6 Northern requirements.



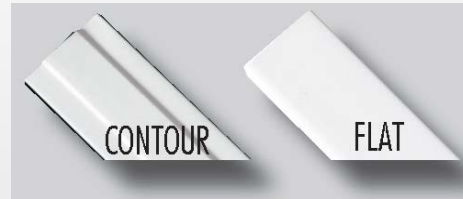
Multi-chambered vinyl profiles maximize viewing area and energy performance while providing superior strength and durability. *5-Series DH* meets a PG-35 for air and water infiltration and deflection.



Standard roll formed half screen with fiberglass mesh. Full screen is available.



1/2" constant force stainless steel coil spring balances, ensure effortless sash operation and dependability.



Grid Options



Low profile ergonomic sash locks are color matched to complement window design.

- Colonial, queen anne and prairie styles available
- Grids between the glass
 - Flat
 - Contour

Colors Available in White and Tan



Additional Options

- 3 1/2" exterior flat casing with sill nose (*white only*)
- (3/4") interior extension jamb receiver
- Factory applied extension jambs (*primed only*)
- Factory mulls and reinforced mulls
- J channel filler
- Vent stops

5-Series Performance

U-Value	SGHC Grids	SGHC No Grids
.28	.33	.36

EnergyStar 6 Requirements

Climate Zone	U-Factor	SHGC	
Northern*	≤ 0.27	Any	Prescriptive
	= 0.28	≥ 0.32	Equivalent Energy Performance
	= 0.29	≥ 0.37	
	= 0.30	≥ 0.42	

Available Egress Sizes

(TTT)

- 36.5in x 61in
- 37in x 61.5in
- 37.5in x 59.5in

For more information on product specifications or to locate a dealer near you, please visit our website.

www.paradigmwindows.com

**All Performance and EnergyStar data shown on this document applies to the double hung (DH) window only. Other window styles may vary.*

Rev. 8/2019



Paradigm Window Solutions
 56 Milliken Street
 Portland, Maine 04103
 1-877-994-6369

© 2019 Paradigm Window Solutions
 House images provided by © Art Form Architecture

EnergyStar® Program, U.S. Environmental Protection Agency www.energystar.gov
 NFRC, National Fenestration Rating Council www.nfrc.com
 Cardinal Glass Industries www.cardinalcorp.com

