

5-Series Window

Designed for higher performance
Reimagined for your home project



Introducing the New and Improved 5-Series Window New Construction and Replacement

5 Reasons To Choose the 5-Series

1. Energy Star v6.0 compliant
2. PG-35 rating
3. Meets egress at 37.5" x 59.5" (TTT)
4. Limited Lifetime Warranty
 - Lifetime (glass, hardware, vinyl)
 - 5 Years Labor (includes parts)
 - 20 Year Transferrable
5. Competitively Priced



*Shown with optional flat casing

Available for both new construction and replacement projects, the 5-Series window line provides performance, strength and beauty while offering excellent value. The 5-Series' durable multi-chambered fusion-welded frame and sash provide superior energy efficiency. 5-Series products are backed by a industry-leading warranty and the local sales and service support you expect from Paradigm.

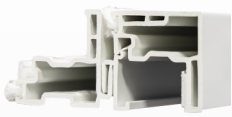
5 Series Window Configurations



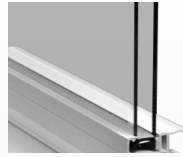
The 5 Series window is available in double hung, single hung, picture and slider window types. Accessories include factory and reinforced mulls, extension jambs, drywall returns and flat exterior casing.

www.5seriesolution.com
www.paradigmwindows.com

5 Series Features



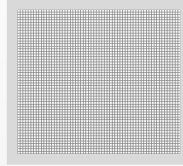
Full interlock system at the meeting rail improves security while 17 contact points of weather-stripping reduce air infiltration.



Standard 3/4" 3rd surface LowE glass with argon gas fill significantly improves solar heat gain to meet EnergyStar 6 Northern requirements.



Multi-chambered vinyl profiles maximize viewing area and energy performance while providing superior strength and durability. 5-Series meets a PG-35 for air and water infiltration and deflection.



Standard roll formed half screen with fiberglass mesh. Full screen is available.



1/2" constant force stainless steel coil spring balances, ensure effortless sash operation and dependability.

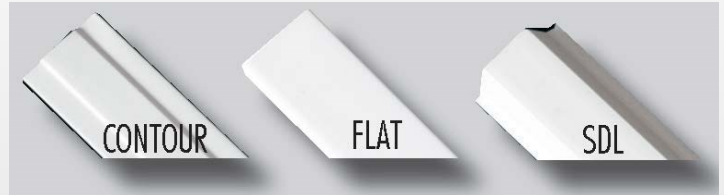


Low profile ergonomic sash locks can be color matched to complement window design.

Colors available in White and Tan



Additional Options



- Grids between the glass
 - Flat
 - Contour
- SDL grids to provide a dimensional appeal to your project
- 3 1/2" exterior flat casing with sill nose (*white only*)
- (3/4") interior extension jamb receiver
- Factory applied extension jambs (*primed only*)
- Factory mulls and reinforced mulls
- J channel filler

5-Series Performance

U-Value	SGHC Grids	SGHC No Grids
.28	.33	.36

EnergyStar 6 Requirements

Climate Zone	U-Factor	SHGC	
Northern*	≤ 0.27	Any	Prescriptive
	= 0.28	≥ 0.32	Equivalent Energy Performance
	= 0.29	≥ 0.37	
	= 0.30	≥ 0.42	

Available Egress Sizes

(TTT)

- 36.5in x 61in
- 37in x 61.5in
- 37.5in x 59.5in

For more information on product specifications or to locate a dealer near you, please visit our website.

www.paradigmwindows.com

Rev. 5/2019



Paradigm Window Solutions
56 Milliken Street
Portland, Maine 04103
1-877-994-6369

© 2019 Paradigm Window Solutions
House images provided by © Art Form Architecture
EnergyStar® Program, U.S. Environmental Protection Agency www.energystar.gov
NFRC, Nation Fenestration Rating Council www.nfrc.com
Cardinal Glass Industries www.cardinalcorp.com

paradigm
Window Solutions For Life.